



# Cultivating *Connections* in Christ

DIOCESE OF DES MOINES

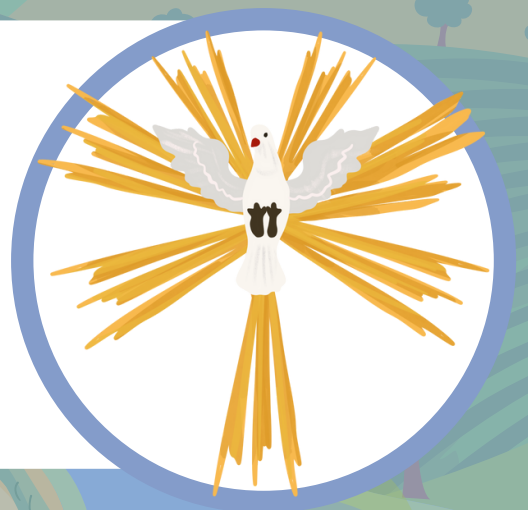


## Create a Culture of Care and Welcome in our Parish Communities

A welcoming parish is a reflection of Christian hospitality. Once we are welcomed, it is important to know we are cared for, that we matter to the life the parish.

## Invite People into an Encounter with Jesus Christ

Jesus invites all of us to have a personal relationship with Him. The work of evangelization is an invitation into an encounter with Jesus which transforms us, our families, our parish, and our communities.



## Accompany our Youth into Discipleship with Jesus Christ

Walking with youth means meeting them where they are. Our youth are interested in making connections with their peers and forming lasting relationships.

## Engage our Young Adults into Full Participation

We seek to connect young adults with Jesus Christ, the Church as a welcoming Christian community, the mission of the Church in the world, and a peer community where faith is nurtured and strengthened.



## Prepare Disciples for the Domestic Church

The family is placed at the heart of discipleship and mission. It is the privileged place for evangelization, catechesis, and spiritual growth.

## Communicating our Message Boldly and Clearly

Good communication is at the core of helping people know and love God. It is the lynchpin in a thriving, active parish.

